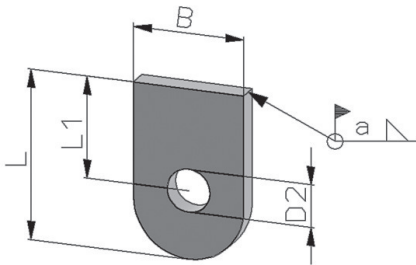


Welding eyes Type AO

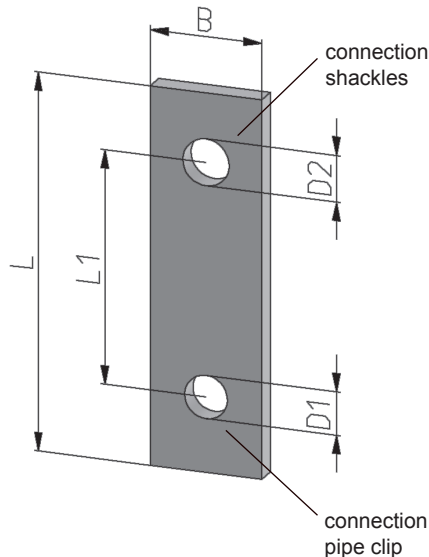
The welds were calculated on a basis of a permissible stress of 75 n/mm² in load case H.



Material:	S235JR	EN 10025-2
Finish:	plain, stamped / drilled	

Article no.	B	D2	L	L1		load chain [kN]	weight [kg]
AO-030-R	30	11	56	40		-	0,10
AO-040-R	40	13	67	45		4,7	0,20
AO-050-R	50	17	78	50		8,8	0,30
AO-060-R	60	23	92	55		13,8	0,60
AO-070-R	70	26	100	60		19,9	0,90
AO-080-R	80	36	120	70		31,6	1,40
AO-100-R	100	43	145	80		46,0	2,40

Straps Type LA

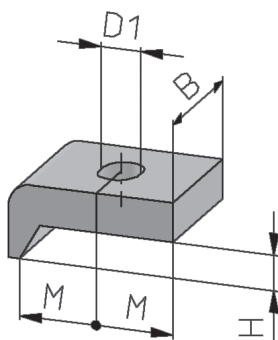


Material:	S235JR	EN 10025-2
Finish:	hot-dip galvanized, stamped / drilled	

Article no.	B	D2	D1	L	L1		load chain [kN]	weight [kg]
LA-044-R-F	30	11	11	73	40		-	0,11
LA-046-R-F	40	13	11	87	50		4,7	0,16
LA-048-R-F	40	17	13	123	75		8,8	0,31
LA-050-R-F	50	21	17	163	100		13,8	0,64
LA-060-R-F	60	21	21	202	125		19,9	1,14
LA-070-R-F	70	26	25	240	150		31,6	1,98
LA-090-R-F	90	36	31	270	170		31,6	2,86
LA-130-R-F	130	43	31	300	190		46,0	5,90

Clampplates Type KP

Material:	S235JR	EN 10025-2
Finish:	hot-dip galvanized, similar to former DIN 3568	



Article no.	B	D1	H	M		weight [kg]
KP-50*07-R-F	50	14	7	23		0,22
KP-50*09-R-F	50	14	9	23		0,23
KP-60*10-R-F	60	18	10	35		0,57
KP-60*12-R-F	60	18	12	35		0,58
KP-60*14-R-F	60	18	14	35		0,59
KP-60*16-R-F	60	18	16	35		0,60
KP-60*18-R-F	60	18	18	35		0,61
KP-60*20-R-F	60	18	20	35		0,63
KP-70*14-R-F	70	23	14	45		1,05
KP-70*16-R-F	70	23	16	45		1,06
KP-70*18-R-F	70	23	18	45		1,07
KP-70*20-R-F	70	23	20	45		1,08
KP-70*22-R-F	70	23	22	45		1,10